

 LynCar

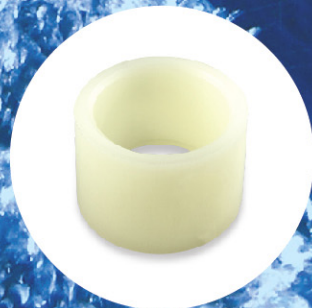
toll free phone: 800-263-7011
toll free fax: 800-459-6227



Waterline[®]

toll free phone: 800-361-3773
toll free fax: 800-625-9481

Cold-X[®]



Cold-X[®] cold expansion tools, valves, expansion rings and fittings

- Certified to ASTM F1960 and NSF SE 7956 standards*, for use with PEX tubing approved for cold expansion at approved temperature
- Cold-X[®] products are made to the highest quality standards using premium materials
- Larger internal diameter than traditional PEX fittings, for greater flow rate
- Industry leading 25-year limited warranty on fittings and expansion rings
- For plumbing and hydronics

www.lyncar.com • www.waterlineproducts.com

Cold-X Tool Cold-X Heads

COLD-X® TOOLS and ACCESSORIES

PART	DESCRIPTION
2532121	expander tool
2532123	expander tool kit 1/2", 3/4" & 1" heads
2532125	1/2" expander tool head
2532126	3/4" expander tool head
2532127	1" expander tool head
2532129	expander tool head with 1/2 head



COLD-X® EXPANSION RINGS

PART	DESCRIPTION
2538012	1/2" PEX ring
2538022	3/4" PEX ring
2538025	1" PEX ring
2538026	1-1/4" PEX ring
2538027	1-1/2" PEX ring
2538028	2" PEX ring



COLD-X® PLASTIC MULTI-PORT TEES

PART	DESCRIPTION
2541299	plastic 2-branch tee 3/4" X 1/2" w 3/4" outlet
2541399	plastic 3-branch tee 3/4" X 1/2" w 3/4" outlet
2540399	plastic 3-branch tee 3/4" X 1/2" X closed
2541499	plastic 4-branch tee 3/4" X 1/2" w 3/4" outlet
2540499	plastic 4-branch tee 3/4" X 1/2" X closed
2542499	plastic 4-branch tee 1" X 1/2" w 3/4" outlet
2540699	plastic 6-branch tee 3/4" X 1/2" X closed



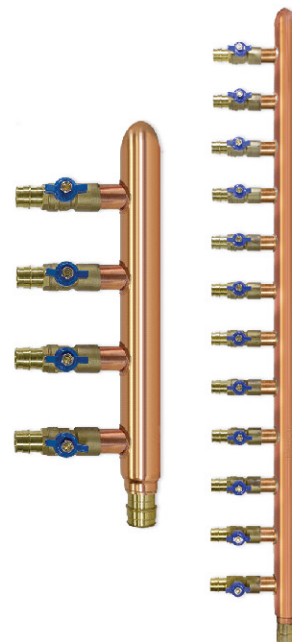
COLD-X® LEAD FREE VALVES and ARRESTORS

PART	DESCRIPTION
1621040LF	1/2" X 3/8" comp. str stop hammer arrestor
1621042LF	1/2" X 3/8" comp. ang stop hammer arrestor
2538004	1/2" brass ball valve
2538006	3/4" brass ball valve
2538008	1" brass ball valve
2538009	1/2" brass ball valve w waste
2538010	3/4" brass ball valve w waste
2538011	1" brass ball valve w waste
2538112	12" CP wall hydrant 1/2" w vacuum breaker
2538443	1/2" PEX X 3/8" OD comp. str stop ball valve
2538543	1/2" PEX X 3/8" OD comp. ang stop ball valve
2538553	1/2" X 3/4" hose thread ang valve



COLD-X[®] LEAD FREE MANIFOLDS and STUBOUTS

PART	DESCRIPTION
2533499	4-branch closed copper manifold 3/4" inlet X 1/2" outlet w ball valve
2533699	6-branch closed copper manifold 3/4" inlet X 1/2" outlet w ball valve
2533899	8-branch closed copper manifold 3/4" inlet X 1/2" outlet w ball valve
2538399	3-branch closed copper manifold 3/4" inlet X 1/2" outlet
2538499	4-branch closed copper manifold 3/4" inlet X 1/2" outlet
2538699	6-branch closed copper manifold 3/4" inlet X 1/2" outlet
2538899	8-branch closed copper manifold 3/4" inlet X 1/2" outlet
2539910	10-branch closed copper manifold 1" inlet X 3/4" outlet w ball valve
2539912	12-branch closed copper manifold 1" inlet X 3/4" outlet w ball valve
2538602	copper stub-out 1/2"X 3-1/2" X 6" w nail flange
2538604	copper stub-out 1/2"X 3-1/2" X 6"
2538607	copper stub-out 1/2"X 3-1/2" X 8"
2538608	copper stub-out 1/2"X 3-1/2" X 8" w nail flange



COLD-X[®] LEAD FREE BRASS FITTINGS

PART	DESCRIPTION
2538044	1/2" brass PEX X 1/2" MPT adpt
2538046	1/2" brass PEX X 3/4" MPT adpt
2538066	3/4" brass PEX X 3/4" MPT adpt
2538077	1" brass PEX X 1" MPT adpt
2538078	1-1/4" brass PEX X 1-1/4" MPT adpt
2538079	1-1/2" brass PEX X 1-1/2" MPT adpt
2538080	2" brass PEX X 2" MPT adpt
11961	shower arm elbow 1/2" X 1/2" FPT
2538340	1/2" brass PEX X 1/2" FPT dropear elbow
2538544	1/2" FPT X 1/2" brass PEX adpt
2538546	3/4" FPT X 1/2" brass PEX adpt
2538566	3/4" FPT X 3/4" brass PEX adpt
2538577	1" FPT X 1" brass PEX adpt
2538578	1-1/4" FPT X 1-1/4" brass PEX adpt CPLG
2538579	1-1/2" FPT X 1-1/2" brass PEX adpt CPLG
2538244	1/2" M SWT X 1/2" brass PEX adpt CPLG
2538246	3/4" M SWT X 1/2" brass PEX adpt CPLG
2538264	1/2" M SWT X 3/4" brass PEX adpt CPLG
2538266	3/4" M SWT X 3/4" brass PEX adpt CPLG
2538277	1" M SWT X 1" brass PEX adpt CPLG
2538344	1/2" F SWT X 1/2" brass PEX adpt CPL
2538346	3/4" F SWT X 1/2" brass PEX adpt CPLG
2538366	3/4" F SWT X 3/4" brass PEX adpt CPLG
2538377	1" F SWT X 1" brass PEX adpt CPLG
2538378	1-1/4" F SWT X 1-1/4" brass PEX adpt CPLG
2538379	1-1/2" F SWT X 1-1/2" brass PEX adpt CPLG
2538380	2" F SWT X 2" brass PEX adpt CPLG

COLD-X[®] PLASTIC FITTINGS

PART	DESCRIPTION		
2539444	1/2" plastic PEX coupling	2539667	1-1/4" plastic tee
2539464	1/2" X 3/4" plastic PEX coupling	2539673	1-1/2" plastic tee
2539476	1"X 3/4" plastic PEX coupling	2539676	2" plastic tee
2539666	3/4" plastic PEX coupling	2539446	1/2" X 1/2"x 3/4" plastic PEX reducing tee
2539467	1" plastic PEX coupling	2539644	3/4" X 1/2" X 1/2" plastic PEX reducing tee
2539477	1-1/4" X 3/4" plastic coupling	2539646	3/4" X 1/2" X 3/4" plastic PEX reducing tee
2539478	1-1/4" X 1" plastic coupling	2539664	3/4" X 3/4" X 1/2" plastic PEX reducing tee
2539479	1-1/4" plastic coupling	2539776	1" X 1" X 3/4" plastic PEX reducing tee
2539480	1-1/2" X 3/4" plastic coupling	2539665	1-1/4" X 1-1/4" X 1" plastic reducing tee
2539481	1-1/2" X 1" plastic coupling	2539669	1-1/2" X 1-1/2" X 1/2" plastic reducing tee
2539482	1-1/2" X 1-1/4" plastic coupling	2539671	1-1/2" X 1-1/2" X 3/4" plastic reducing tee
2539483	1-1/2" plastic coupling	2539672	1-1/2" X 1-1/2" X 1" plastic reducing tee
2539485	2" X 1-1/2" plastic coupling	2539674	2" X 2" X 3/4" plastic reducing tee
2539486	2" plastic coupling	2539675	2" X 2" X 1" plastic reducing tee
2539144	1/2" plastic PEX elbow	2539075	3/4" plastic PEX plug
2539166	3/4" plastic PEX elbow	2539060	1" plastic PEX plug
2539177	1" plastic PEX elbow	2539067	1-1/4" plastic test plug
2539178	1-1/4" plastic elbow	2539068	1-1/2" plastic test plug
2539179	1-1/2" plastic elbow	2539069	2" plastic test plug
2539180	2" plastic elbow	2539044	1/2" plastic PEX X 1/2" MPT adpt
2539104	1/2" plastic PEX tee	2539064	3/4" X 1/2" plastic PEX elbow
2539106	3/4" plastic PEX tee	2539066	3/4" plastic PEX X 3/4" MPT adpt
2539107	1" plastic PEX tee		



Cold-X[®] cold expansion tools, valves, expansion rings and fittings

- Certified to ASTM F1960 and NSF SE 7956 standards*, for use with PEX tubing approved for cold expansion at approved temperature
- Cold-X[®] products are made to the highest quality standards using premium materials
- Larger internal diameter than traditional PEX fittings, for greater flow rate
- Industry leading 25-year limited warranty on fittings and expansion rings
- For plumbing and hydronics

www.lyncar.com • www.waterlineproducts.com

contact 905-453-2400 800-263-7011 for NSF certification details